

2025

BM

DESIGN





# LANDSCAPE

# Private Villa Stone park

Location : New Cairo, Egypt  
Project type : Landscape design  
Area : 370 sqm

A design dedicated to creating a serene and tranquil outdoor atmosphere with a holistic approach. Natural materials such as stone, wood and gravel enhance the organic feel of the landscape while a neutral color palette creates a soothing and cohesive backdrop.





Italian cypress trees

Seating area / Pergola

Seating area

Foxtail palm tree

Grass

Hedges

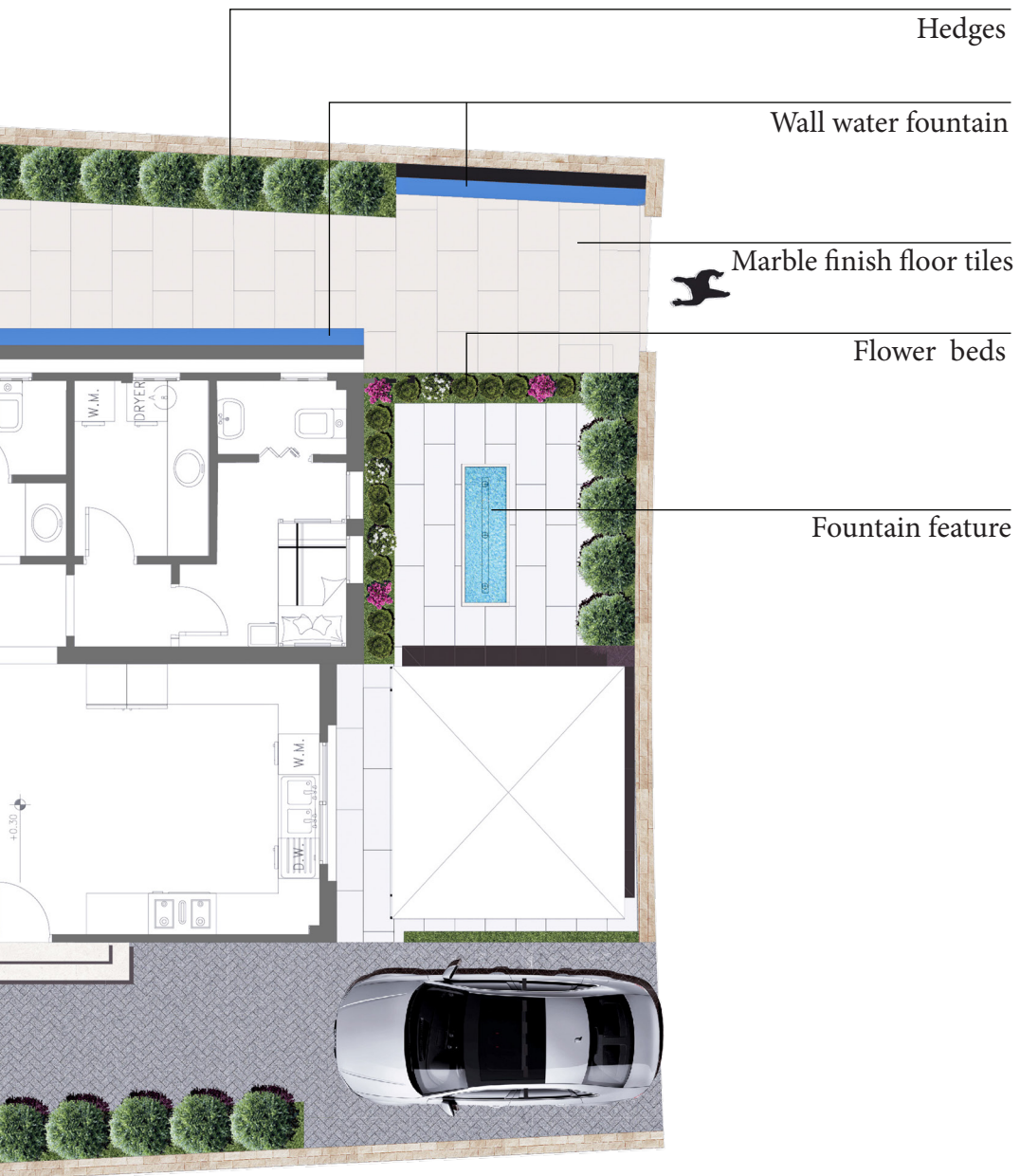
Shrubs & trees

Dining table

90 x 30 Stone finish  
Porcelain tiles / Grey

BBQ area / High table  
counter top



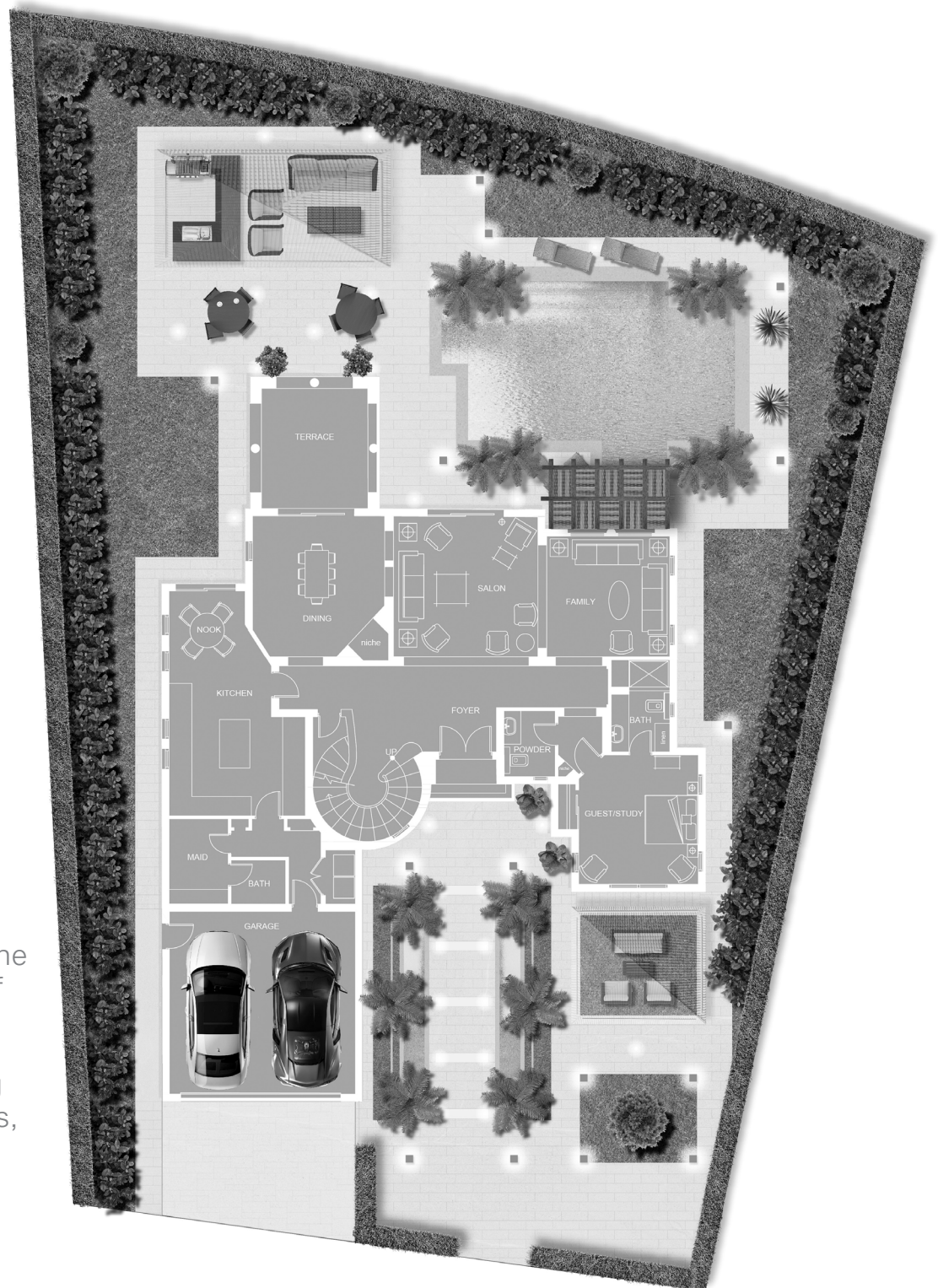


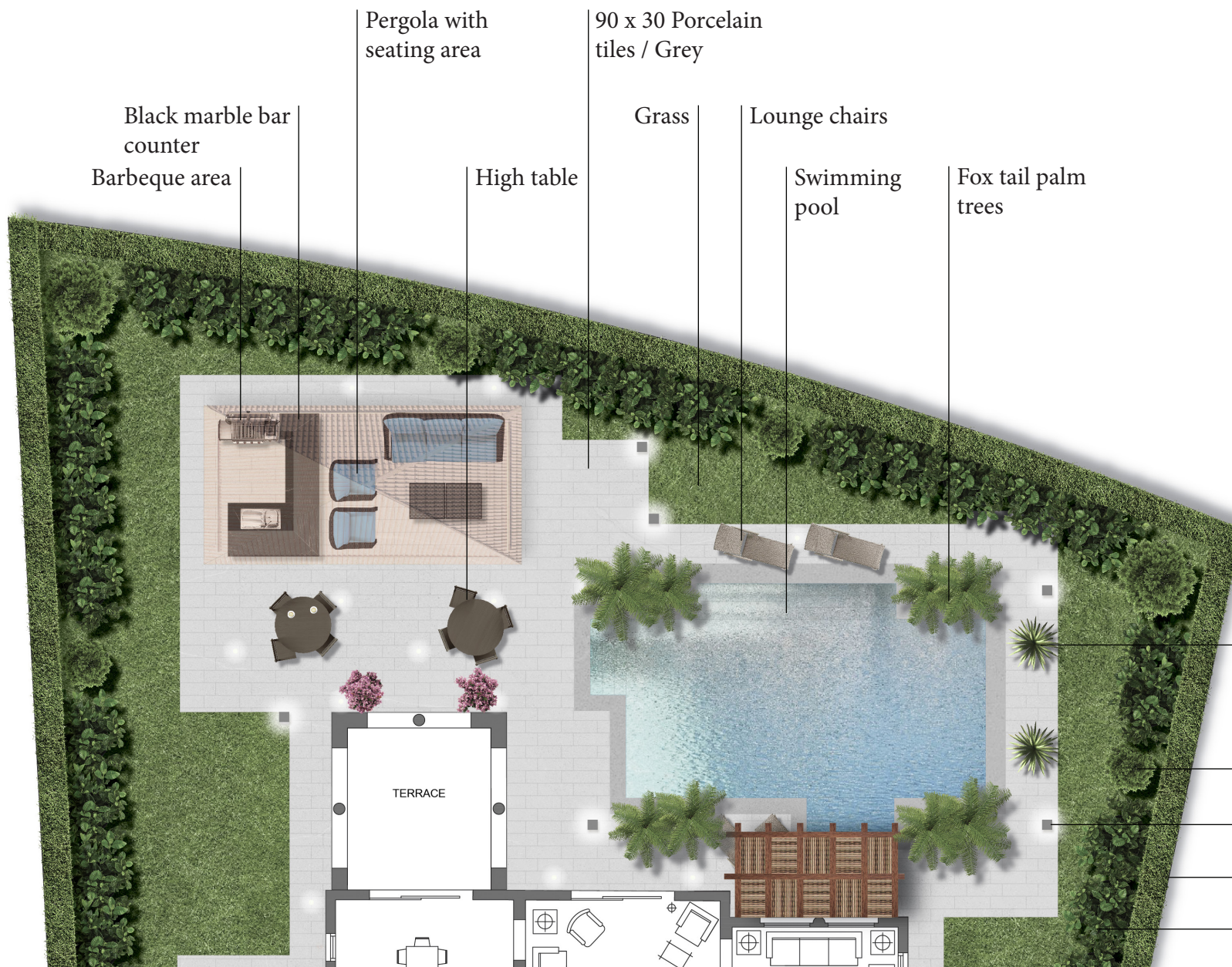
# Private Villa Uptown Cairo

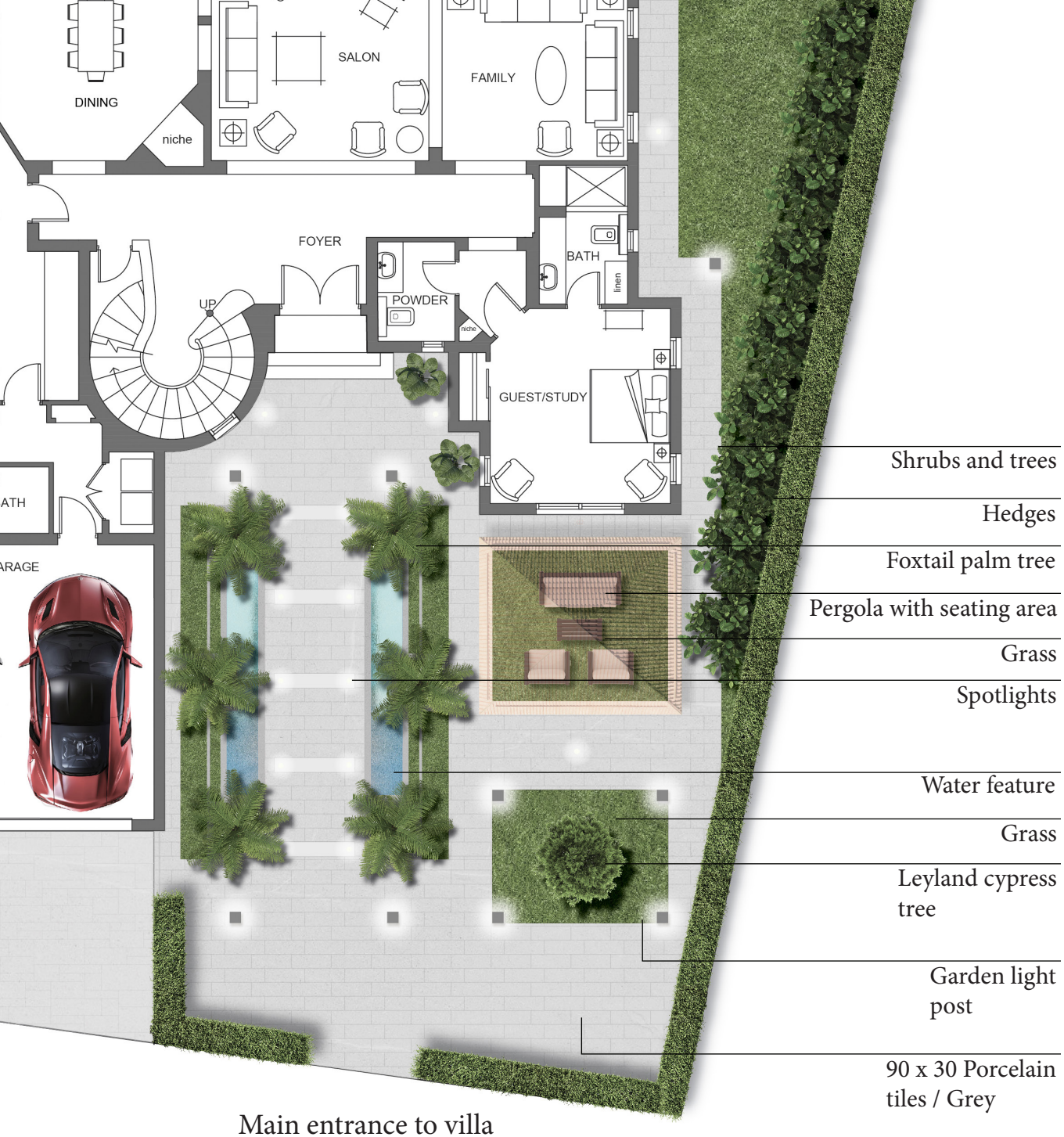
Location : Cairo, Egypt  
Project type : Landscape design  
Area : 710 sqm

This refined landscape design exemplifies a sophisticated blend of modern design and natural beauty. The luxurious outdoor space is centered around an expansive pool, bordered by lush greenery and tropical palms, offering a serene retreat. A pergola-covered lounge area adds an element of relaxed sophistication, providing both shade and comfort.

Visitors are welcomed through a grand entrance, featuring a symmetrical pathway lined with palms and plotted plants, leading to the heart of the outdoor space.



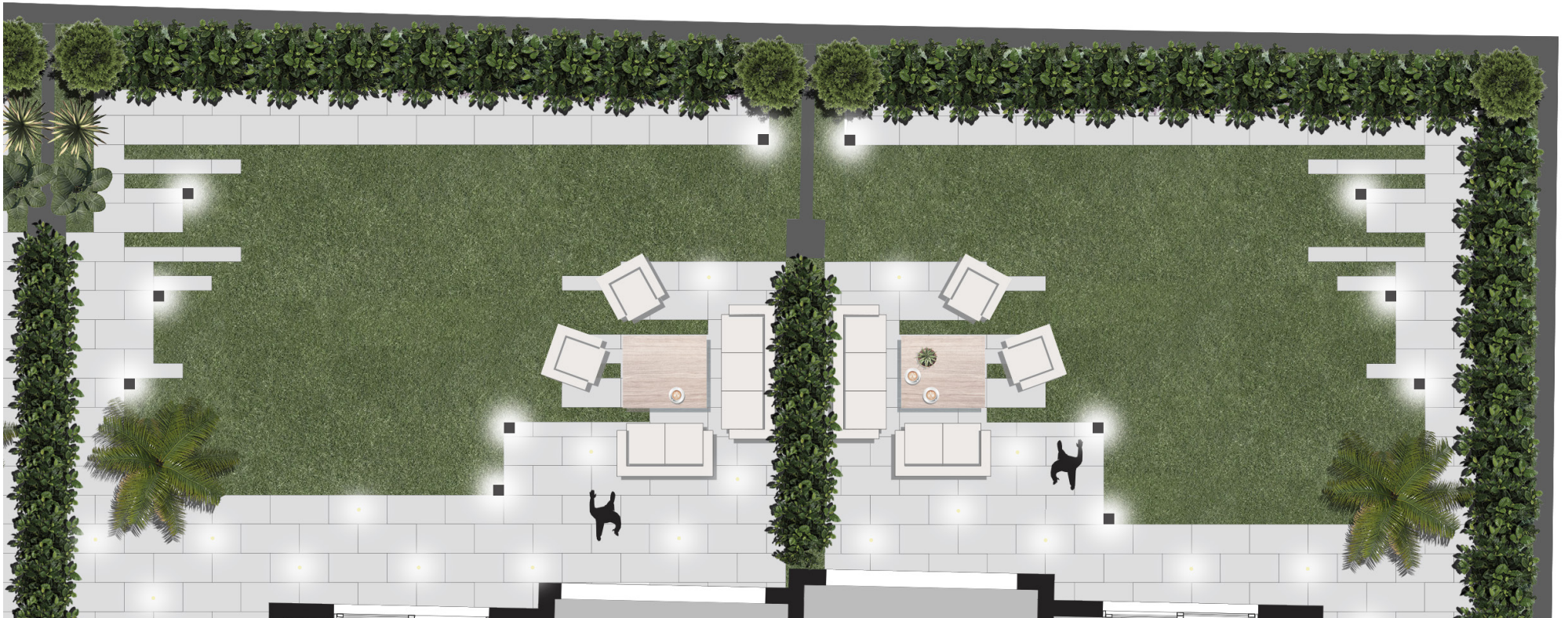




Main entrance to villa









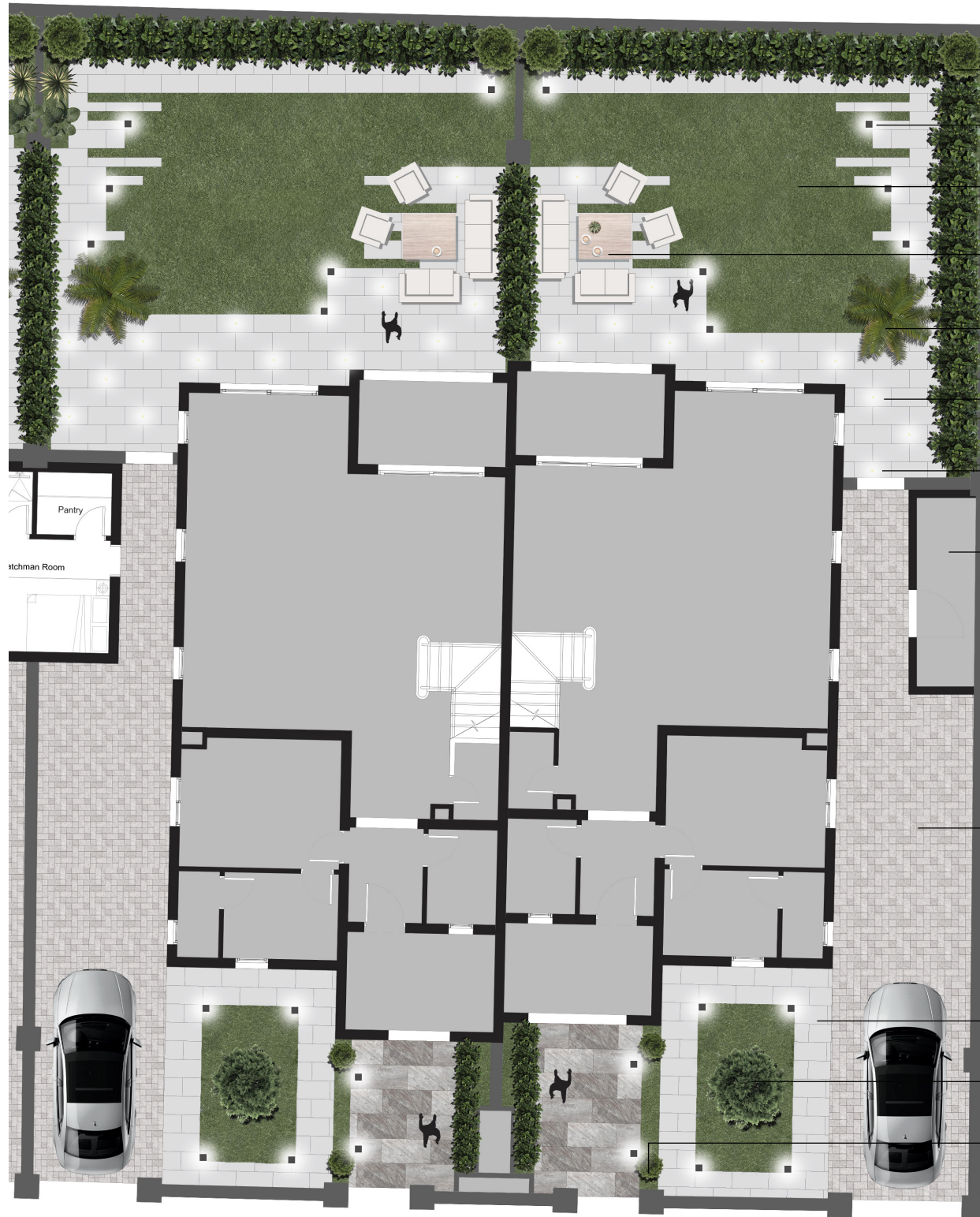
## Townhouse Mivida

Location : Cairo, Egypt

Project type : Landscape design

Area : 200 sqm

This Tuscan-inspired landscape design combines rustic charm with modern elegance, capturing the warmth and beauty of Mediterranean aesthetics. The natural stone facade, slender Italian cypress trees, and lush garden beds create an inviting atmosphere, while intricate geometric paving and a shaded pergola add structure and sophistication. The combination of these features captures the essence of Tuscany, offering a serene and picturesque space for relaxation and social gatherings in a contemporary setting.



Hedges

Garden light post

Grass

Seating area

Foxtail palm tree

90 x 30 Porcelain tiles / Light Grey

Floor spotlights

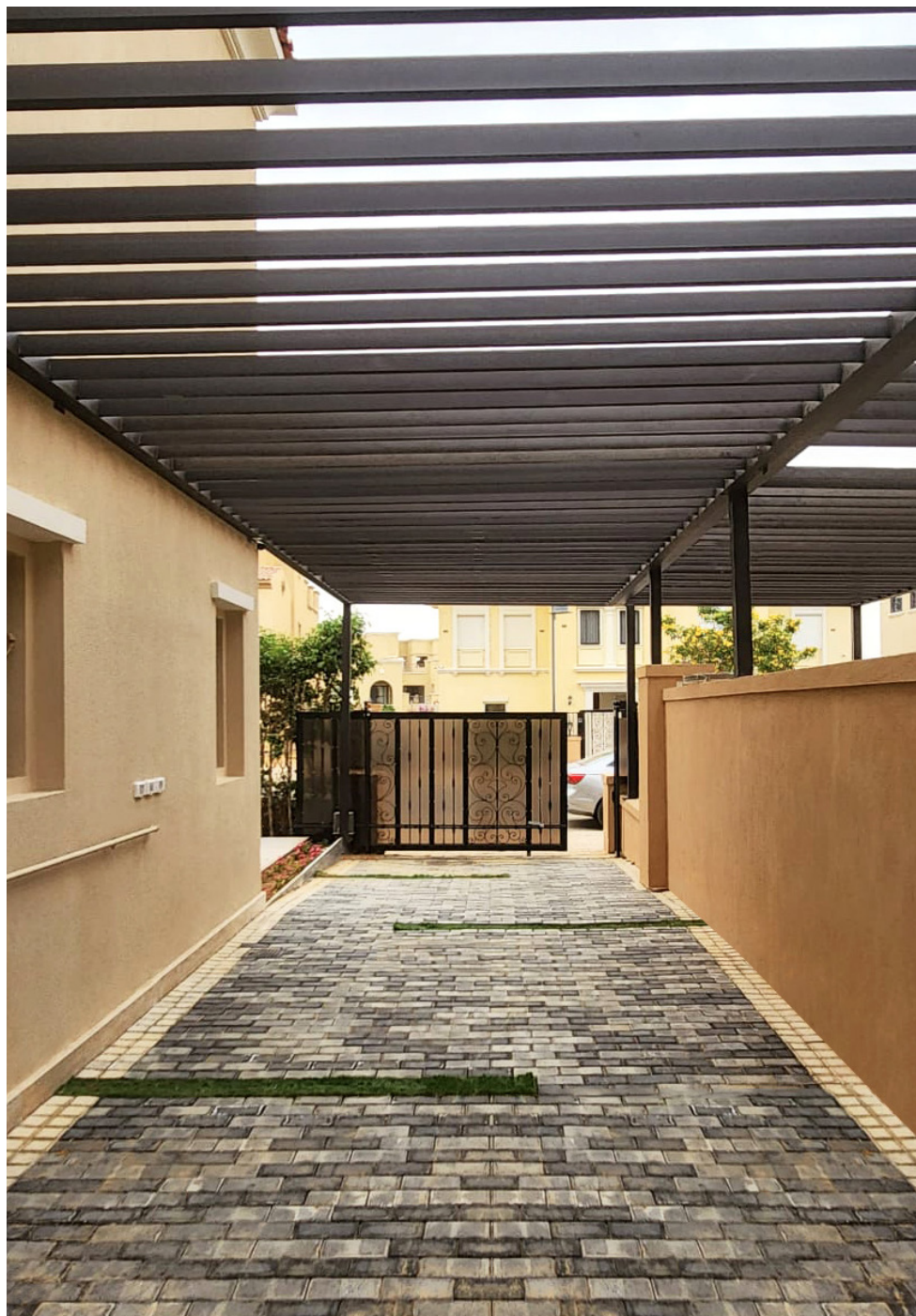
Watchman room

Parking Interlock tiles

90 x 30 Porcelain tiles / Light Grey

Leyland cypress tree

Italian cypress tree





INTERIOR

# Private Villa Arabian Ranches

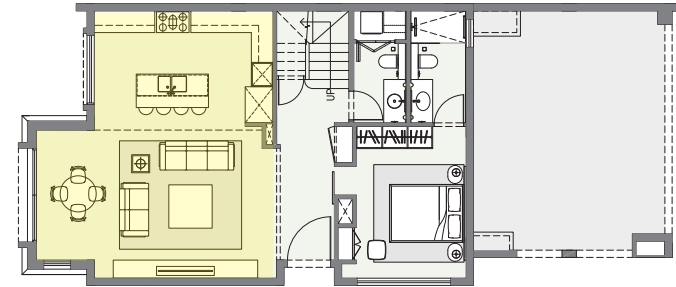
---

Location : Al Reem 1, Dubai  
Project type : Interior Renovation  
Area : 145 sqm

This design seamlessly blends traditional and modern design elements, using bold colors, intricate patterns, and timeless materials to create elegant, functional, and inviting spaces.

This renovation project reflects a modern farmhouse style, with a touch of classic elegance.



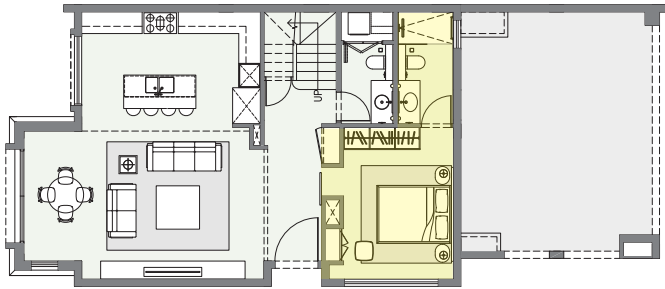


## KITCHEN, LIVING ROOM AND DINING

The space reflect an open-plan concept, blending functionality with refined elegance through warm wooden flooring, a rustic modern kitchen island, and soft ambient lighting for a cozy yet sophisticated feel.







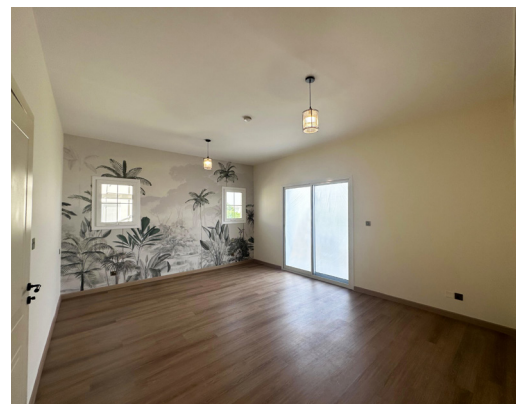
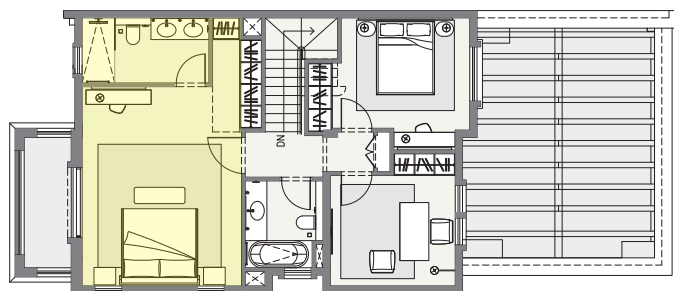
## STUDY ROOM & BATHROOM

A space that exudes a balance of vintage elegance and modern industrial touches, creating an atmosphere that feels both timeless and contemporary.



A distinctive space defined by bold contrasts, black and gold accents, and mediterranean charm.

## MASTER BEDROOM & BATHROOM



---

---



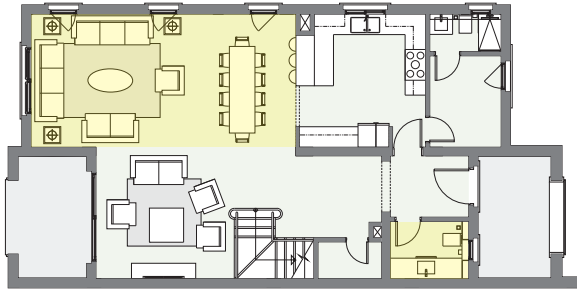
# Townhouse Mivida

Location : Cairo, Egypt  
Project type : Interior design  
Area : 250 sqm



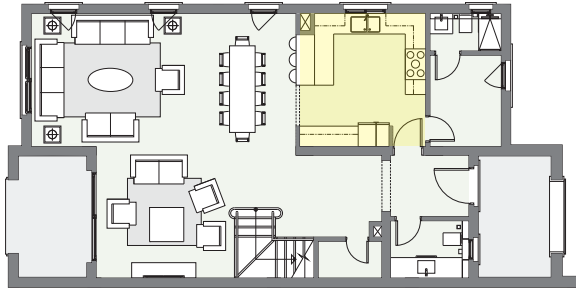
---

This townhouse balances classic with modern simplicity, creating a fusion of styles. While the exterior and outdoor aesthetic draws inspiration from Tuscan architecture, inside, the designs blends contemporary with classic elements with rich wood accents, marble finishes, and ambient lighting.



## LIVING ROOM, DINING & POWDER ROOM

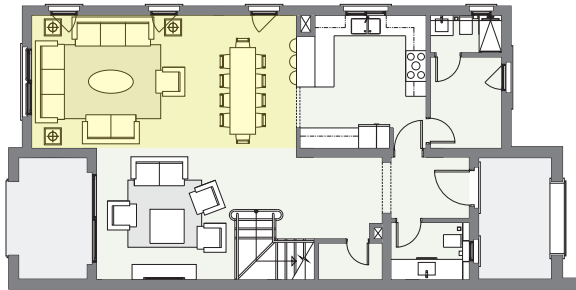
This space embraces a modern industrial style. Bold accents are introduced to an overall neutral palette to create a rich contrast that complements earthy warm tones.



## KITCHEN

Rich wood tones add depth and contrast to the marble backsplash and sleek high-gloss cabinetry. Ambient lighting enhances the textures and materials, making the kitchen a striking centerpiece of the home.

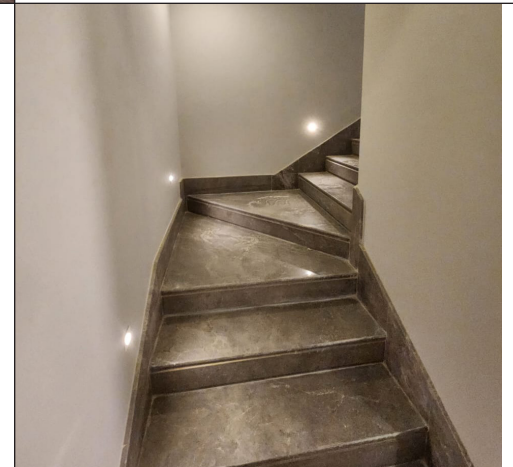




## MASTER BEDROOM & DRESSING

This master bedroom, expanded and merged with the living room, offers a spacious yet private retreat. A dressing room expanded and enhanced with ambient lighting, adds to the luxury of the space.





---

---



## Office Interior

---

Location : Dubai, Uae

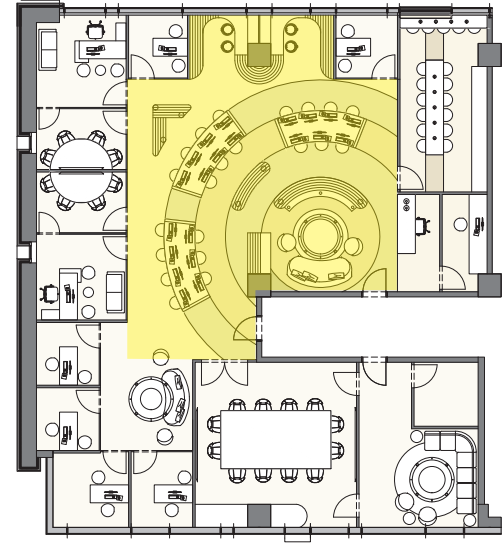
Project type : Interior renovation

Area : 320 sqm

Designed to foster a refined and inspiring workspace, this office seamlessly blends natural materials with contemporary elegance. Expansive glass panels invite abundant natural light, enhancing the warmth of wood, stone, and soft neutral tones. Thoughtful spatial planning ensures seamless flow between collaborative and private areas, while carefully curated textures and lighting add depth and sophistication to the environment.

## OPEN-PLAN WORKSPACE

The open-plan workspace fosters collaboration and productivity with curved workstations, ergonomic seating, and natural light. Warm wood tones and a fluid layout create a cohesive and inviting atmosphere.

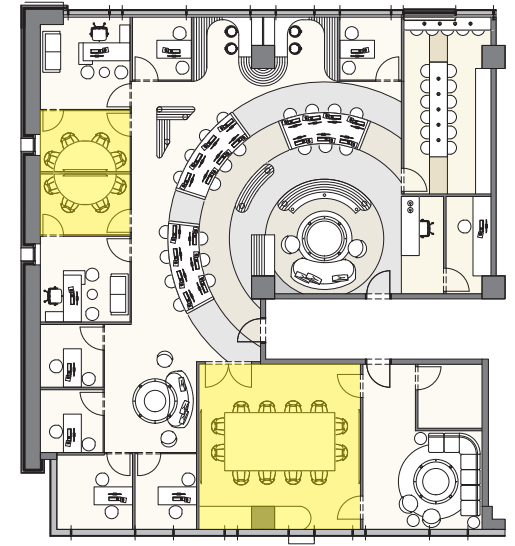


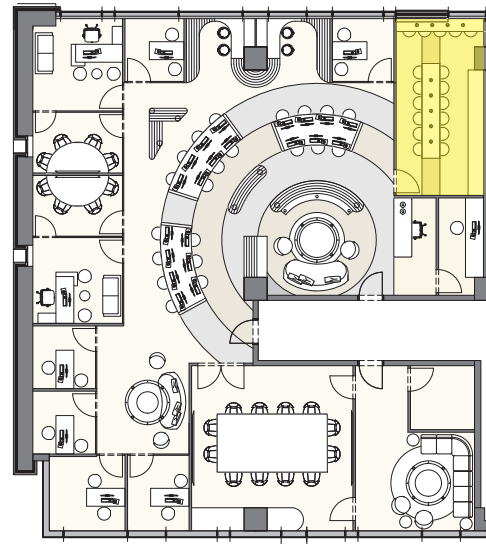




## MEETING ROOMS

Earthy hues and rich wood tones create a refined aesthetic and ambiance that elevate the atmosphere, creating balance between professionalism and comfort.





## OFFICE PANTRY

Modern minimalist pantry featuring light wood, marble, and black accents, with a sculptural curved island, warm lighting, and a sleek slatted ceiling.

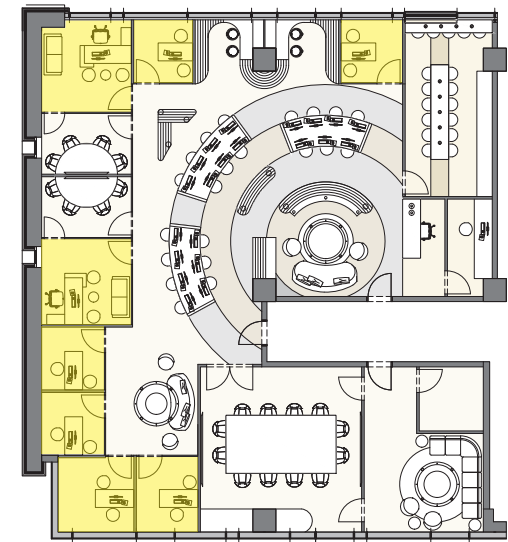






## PRIVATE OFFICE SPACE

The open-plan workspace fosters collaboration and productivity with curved workstations, ergonomic seating, and natural light. Warm wood tones and a fluid layout create a cohesive and inviting atmosphere.





## CONTACT

 +971 58 580 8741  
 @bemdesignstudio  
 info@bemdesign.ae  
 www.bemdesign.ae

2025

